

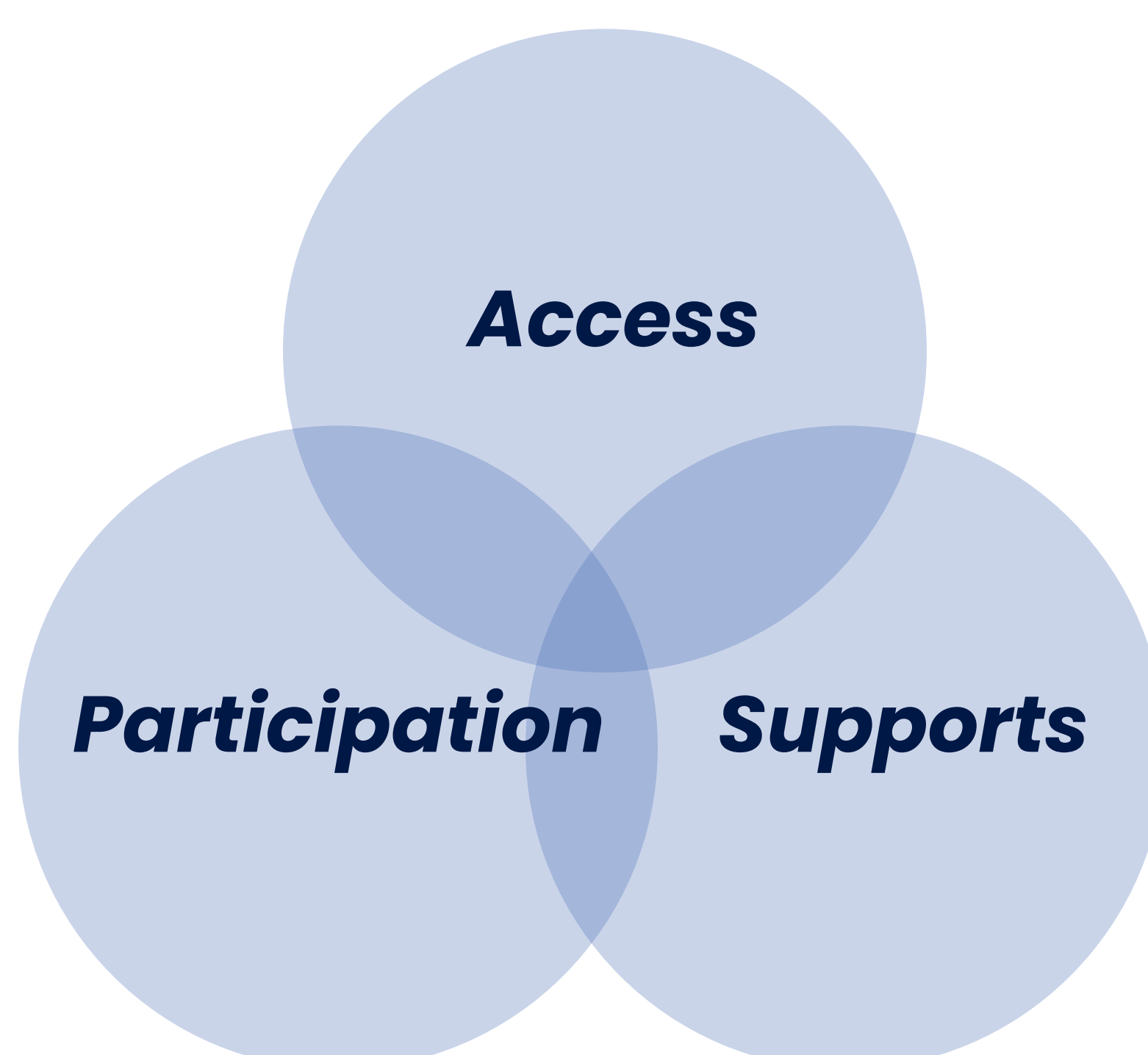
Inclusion in California Early Learning and Care



About the Study

All of California's families deserve high-quality early learning and care options for their children. For the families of children with disabilities, this need is even more pressing. Despite efforts to include children with disabilities in subsidized early learning and care, less than 2% of children under the age of 5 who are in subsidized early learning and care in California have a disability.

SRI Education and the California Department of Education (CDE) have been awarded a grant from the Administration for Children and Families (ACF) to learn about how we can improve the inclusion of children with disabilities in subsidized early learning and care in our state.



Three Critical Components

Inclusion of children with disabilities in early learning and care has three critical components¹:

- **Access** to a wide range of early learning and care settings and to the learning opportunities in those settings
- Full **participation** of children with disabilities with their peers in learning activities
- Availability of **supports** that children and organizations need to enable the inclusion of all children

¹ Division for Early Childhood & National Association for the Education of Young Children (2009). *Early childhood inclusion: A Joint Position Statement of the Division of Early Childhood (DEC) and the National Association for the Education of Young Children (NAEYC)*. Retrieved from <https://www.decdocs.org/position-statement-inclusion>

Study Activities



ANALYZE DATA

Analyze early learning and care data collected by the state.



INTERVIEW KEY INFORMANTS

Interview key informants to learn about the inclusion of children with disabilities in early learning and care.



CONDUCT CASE STUDIES

Conduct case studies with 60 families across six communities. Case studies will include interviews, observations, and reviews of the children's Individualized Education Program (IEP).

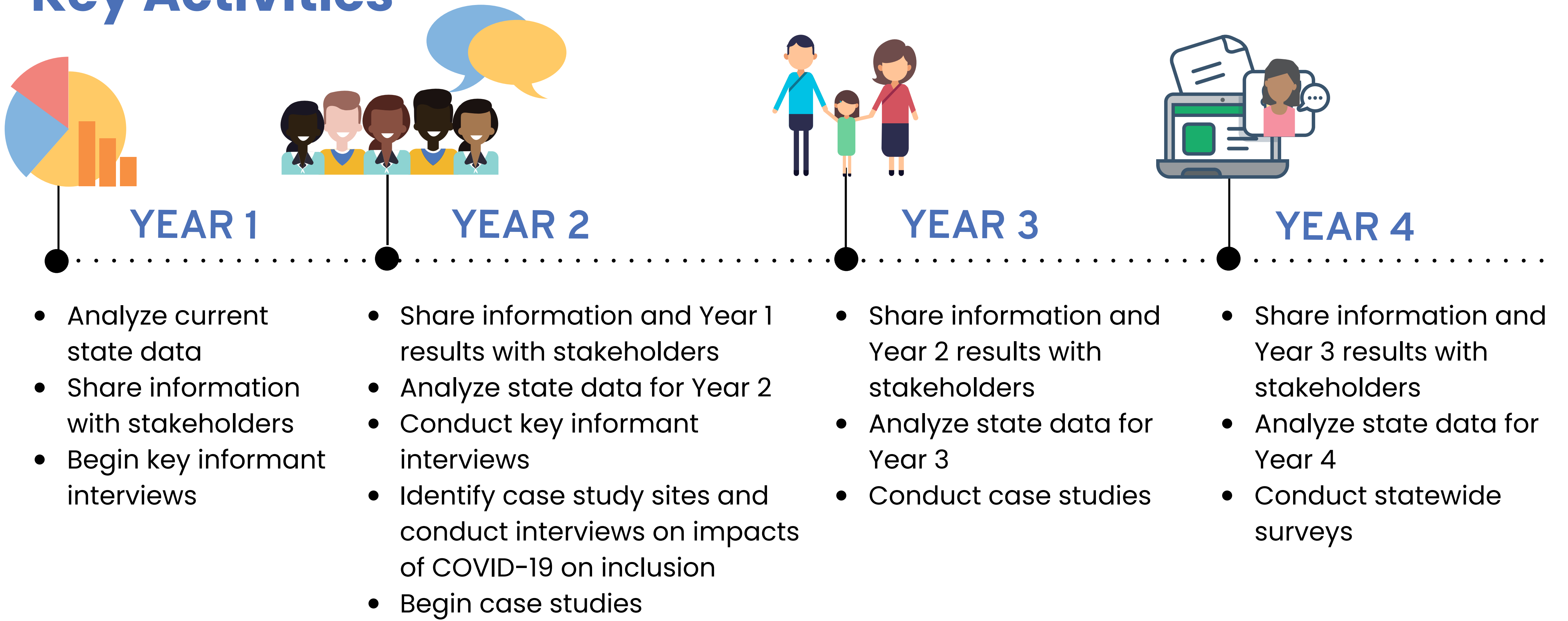


SURVEY STAFF & ADMINISTRATORS

Conduct statewide surveys of early learning and care staff and preschool special education administrators.



Key Activities



For more information, contact Kathryn Morrison at kathryn.morrison@sri.com or (650) 859-3922.